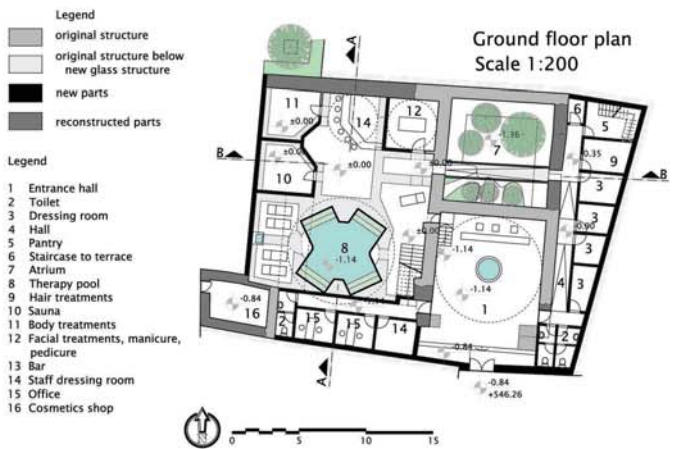
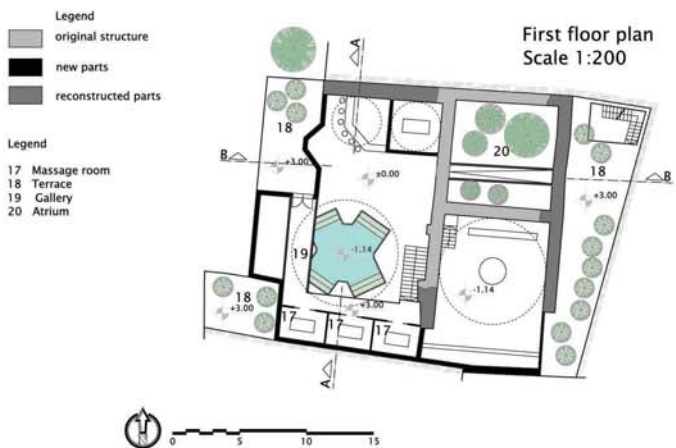


# ACQUA



# Firuz - Beg Hamam

The idea was to bring back the original function in a modern way. Design of domes is inspired by the cultural heritage of Sarajevo. Transparency of domes depends on the position in which they are located, and transparency is achieved by varying the density structure of the construction. This creates the desired atmosphere in a building. Traditional materials such as stone and wood, combined with glass and steel are used. Space is improved by introducing the greenery on the building and into it, resulting in an interesting combination of natural, old and new.



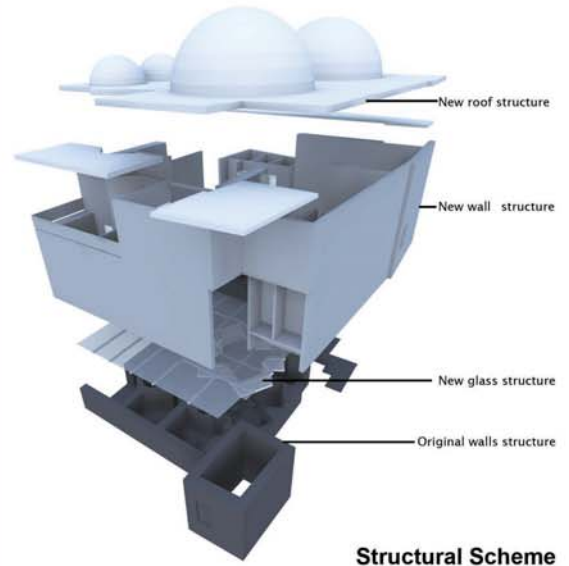
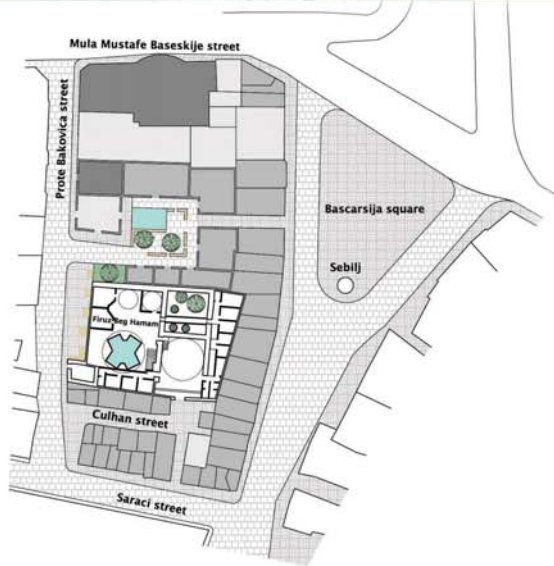


Detail from the closet in Svrzina Kuca in Sarajevo which inspired the design

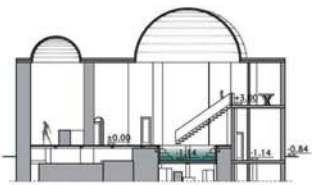
# ACQUA

Situation Plan  
Scale 1:500

- Legend
- one story building
  - two story building
  - three story building
  - water
  - greenery
  - pavement
  - pavement
  - urban furniture



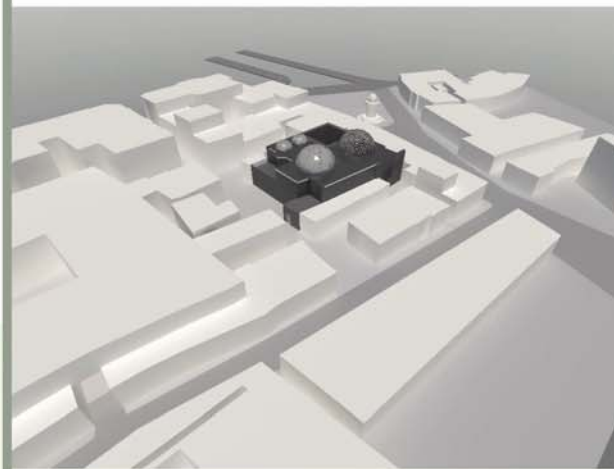
Structural Scheme



Section A-A  
Scale 1:200



Section B-B  
Scale 1:200



## Firuz - Beg Hamam

